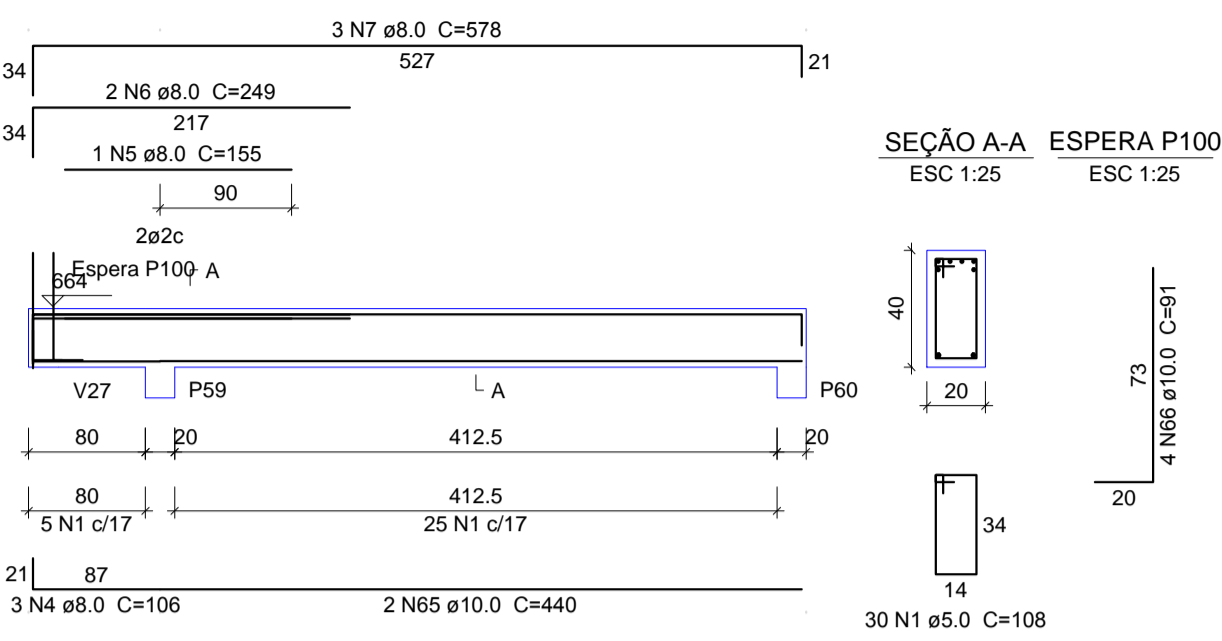
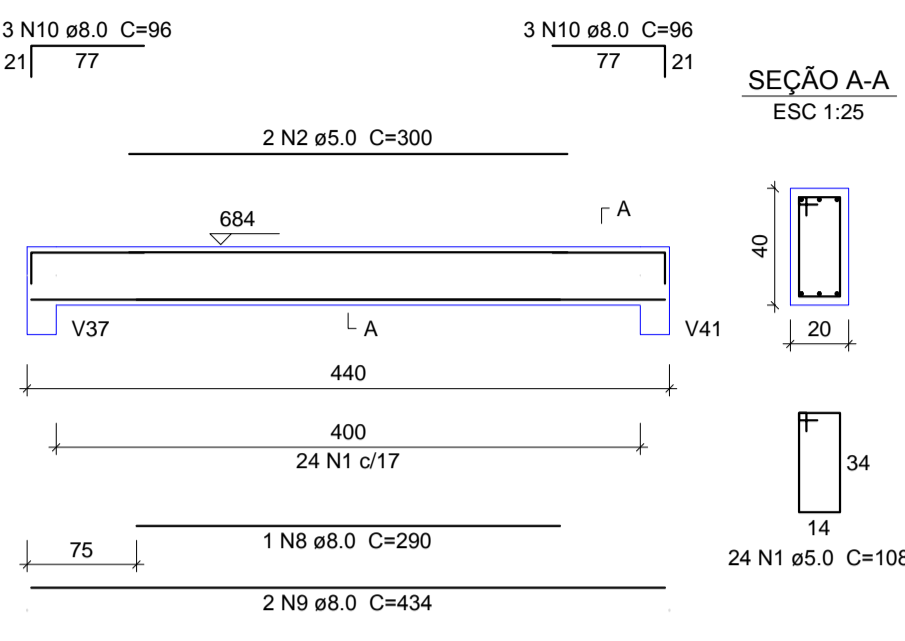


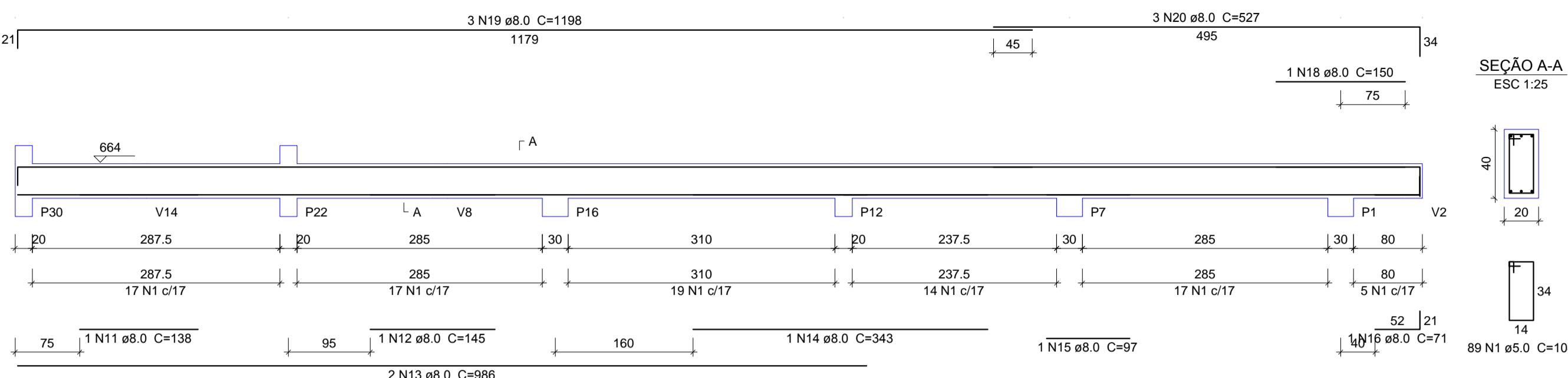
V22
ESC 1:50



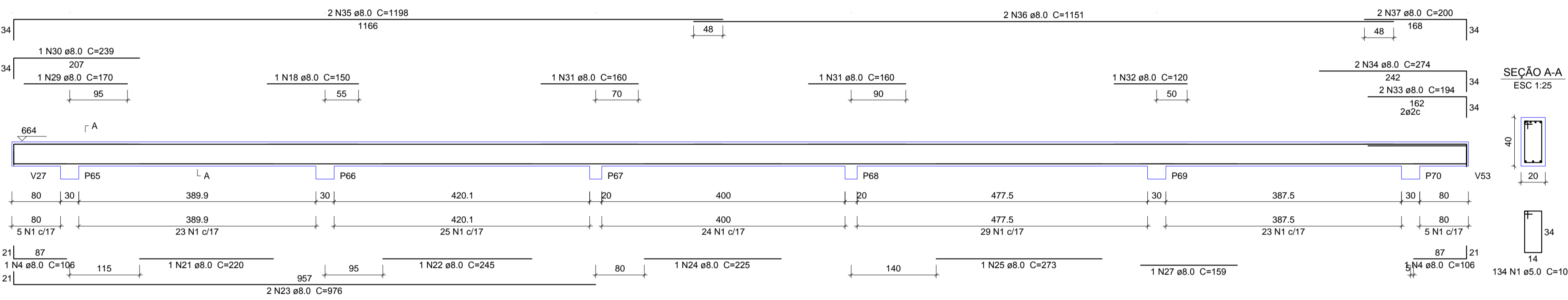
V23
ESC 1:50



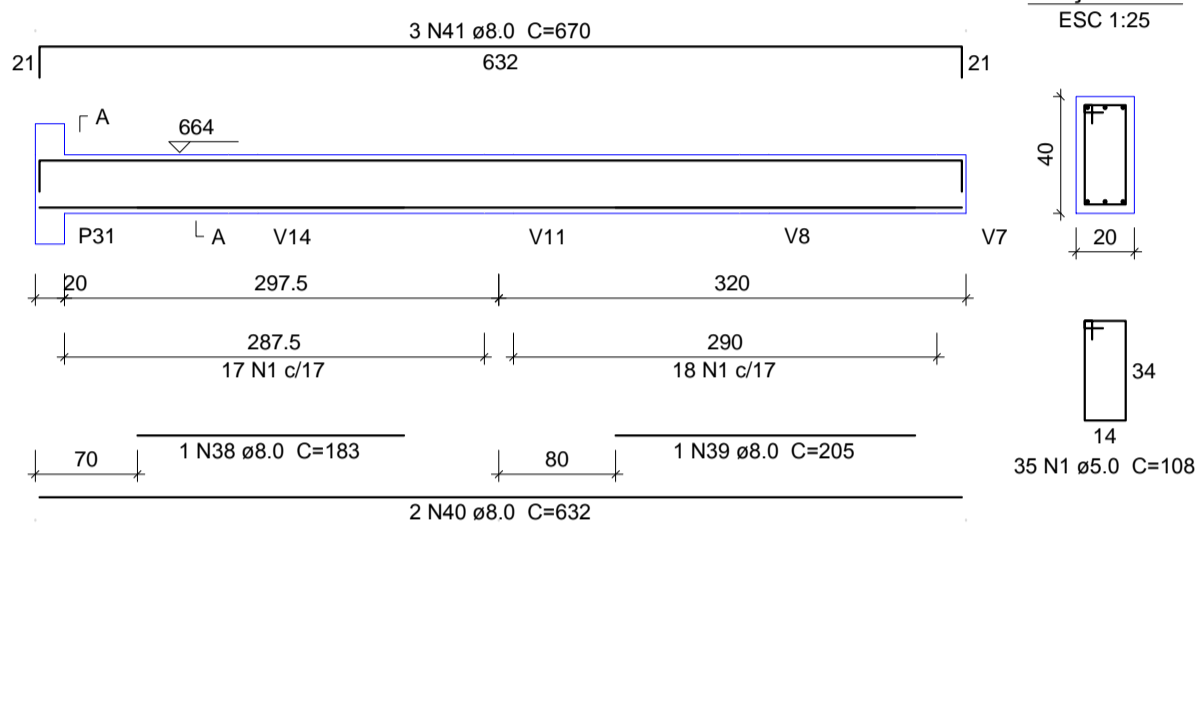
V29
ESC 1:50



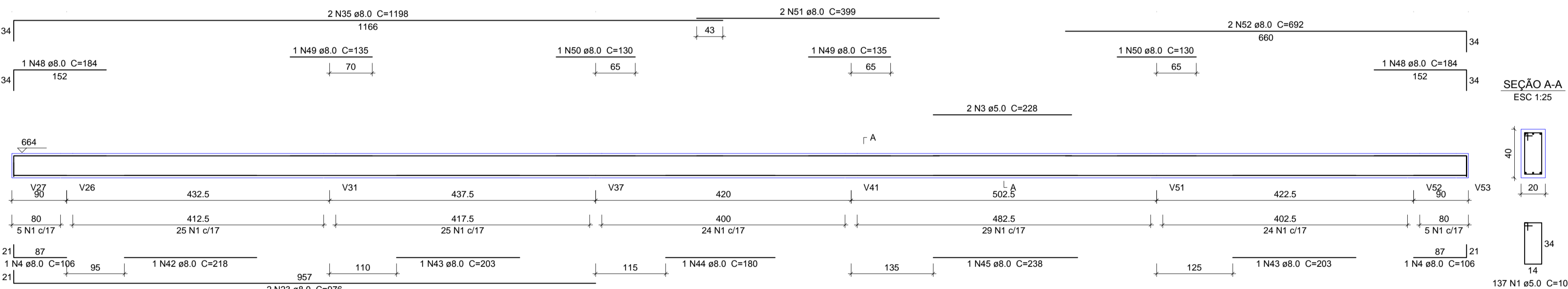
V24
ESC 1:50



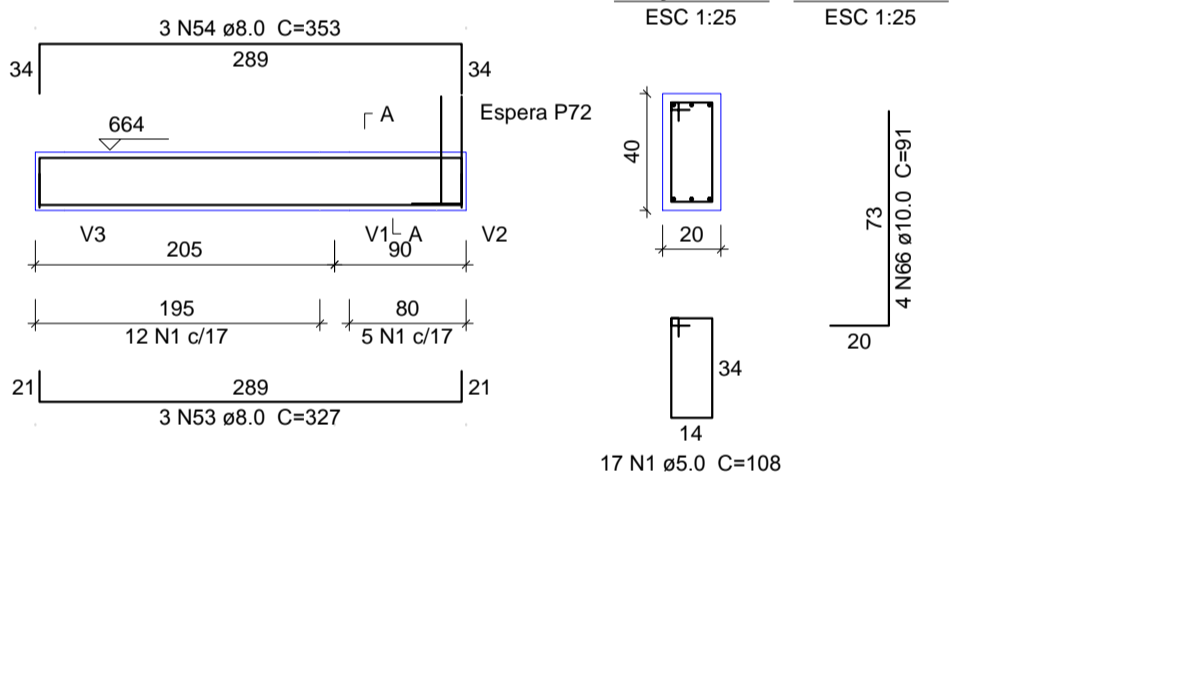
V30
ESC 1:50



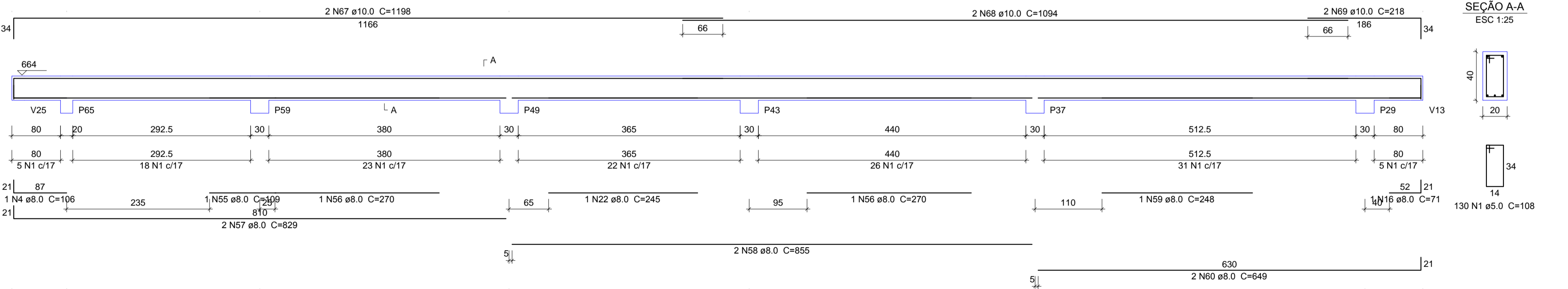
V25
ESC 1:50



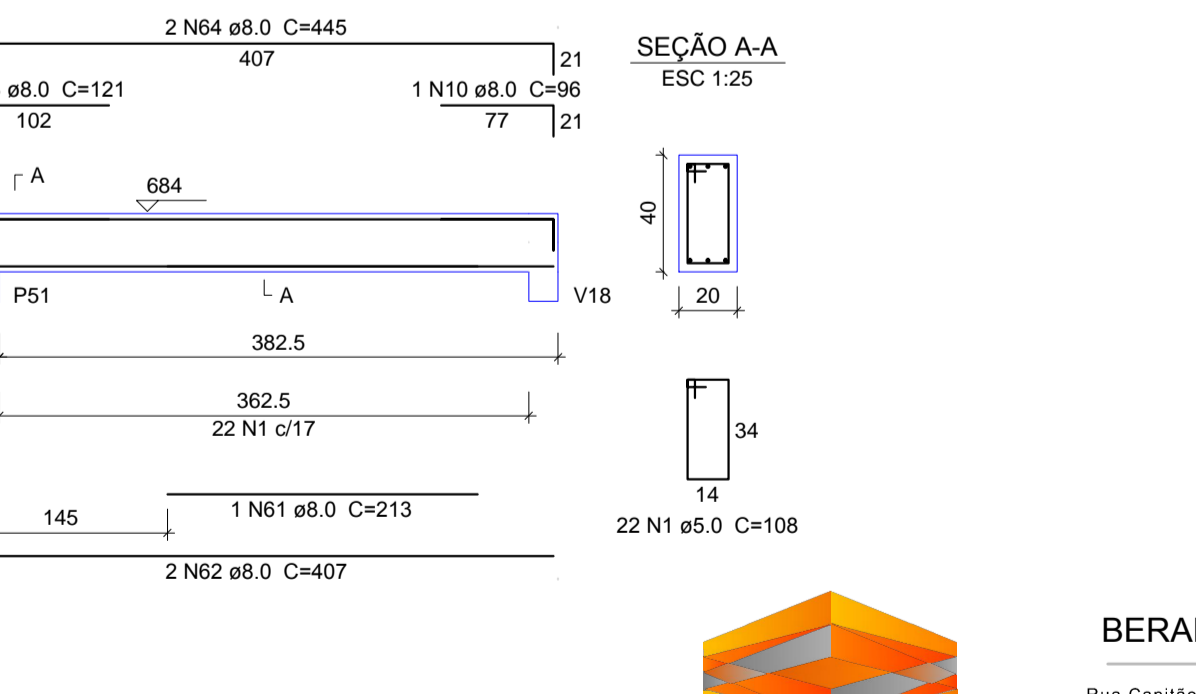
V34
ESC 1:50



V26
ESC 1:50



V35
ESC 1:50



Relação do aço

ACO	N	DIAM (mm)	QUANT (Barras)	UNIT (cm)	C.TOTAL (cm)
CA60	1	5.0	618	108	66744
	2	5.0	300	228	600
	3	5.0	2	228	456
CA50	4	8.0	8	106	848
	5	8.0	1	155	155
	6	8.0	2	249	498
	7	8.0	3	578	1734
	8	8.0	1	290	290
	9	8.0	2	434	868
	10	8.0	7	96	672
	11	8.0	1	138	138
	12	8.0	1	145	145
	13	8.0	2	986	1972
	14	8.0	1	343	343
	15	8.0	1	97	97
	16	8.0	2	71	142
	17	8.0	2	689	1378
	18	8.0	2	150	300
	19	8.0	3	1198	3594
	20	8.0	3	527	1581
	21	8.0	1	220	220
	22	8.0	2	245	490
	23	8.0	4	976	3904
	24	8.0	1	225	225
	25	8.0	1	273	273
	26	8.0	2	949	1898
	27	8.0	1	159	159
	28	8.0	2	524	1048
	29	8.0	1	170	170
	30	8.0	1	239	239
	31	8.0	2	160	320
	32	8.0	1	120	120
	33	8.0	2	194	388
	34	8.0	2	274	548
	35	8.0	4	1198	4792
	36	8.0	2	1151	2302
	37	8.0	2	200	400
	38	8.0	1	183	183
	39	8.0	1	205	205
	40	8.0	2	632	1264
	41	8.0	3	670	2010
	42	8.0	1	218	218
	43	8.0	2	203	406
	44	8.0	1	180	180
	45	8.0	1	238	238
	46	8.0	2	923	1846
	47	8.0	2	529	1058
	48	8.0	2	184	368
	49	8.0	2	135	270
	50	8.0	2	130	260
	51	8.0	2	399	798
	52	8.0	2	692	1384
	53	8.0	3	327	981
	54	8.0	3	353	1059
	55	8.0	1	109	109
	56	8.0	2	270	540
	57	8.0	2	829	1658
	58	8.0	2	855	1710
	59	8.0	1	248	248
	60	8.0	2	649	1298
	61	8.0	1	213	213
	62	8.0	2	407	814
	63	8.0	1	121	121
	64	8.0	2	445	890
	65	10.0	2	440	880
	66	10.0	8	91	728
	67	10.0	2	1198	2396
	68	10.0	2	1094	2188
	69	10.0	2	218	436

Resumo do aço

ACO	DIAM (mm)	C.TOTAL (m)	PESO + 10% (kg)
CA50	8.0	525.8	228.2
CA60	10.0	66.3	45
CA60	5.0	678	115
PESO TOTAL (kg)			
CA50		273.2	
CA60		115	

Volume de concreto (C-30) = 8.85 m³
Área de forma = 110.63 m²



BERARDI ENGENHARIA & CONSTRUÇÕES LTDA.
Rua Capitão Eteutério, 610, Sala 406, Edifício Centro Executivo, Passo Fundo/RS 99010-060
berardiengenharia@gmail.com (54) 3313 9870 - (54) 9994 0937
CNPJ: 13.425.382/0001-47

RESPONSÁVEL TÉCNICO: CONTRATANTE:
Jean Berardi Manica Engº Civil CREA-RS 133.545-D Prefeitura Municipal de Jóiá Cnpj. 09.650.121/0001-92

PROJETO: **PROJETO ESTRUTURAL**
CONTEUDO DA PRANCHA: **FERRAGENS VIGAS LAJE DE FORRO 03**

ENDEREÇO DA OBRA: Rua Dr. Edmar Kruehl - Nº 188 - Centro - Jóiá/RS
PROJETISTA: Jean Berardi ESCALA: 1/50 DATA: Agosto de 2017 ÁREA DO PROJETO: 1.139,11 m²

E-17

DIREITOS AUTORAIS RESERVADOS CONFORME ARTIGO 184 DO CÓDIGO PENAL LEI 9610 DE 19/02/1998 E RESOLUÇÃO CONFEA 205/71