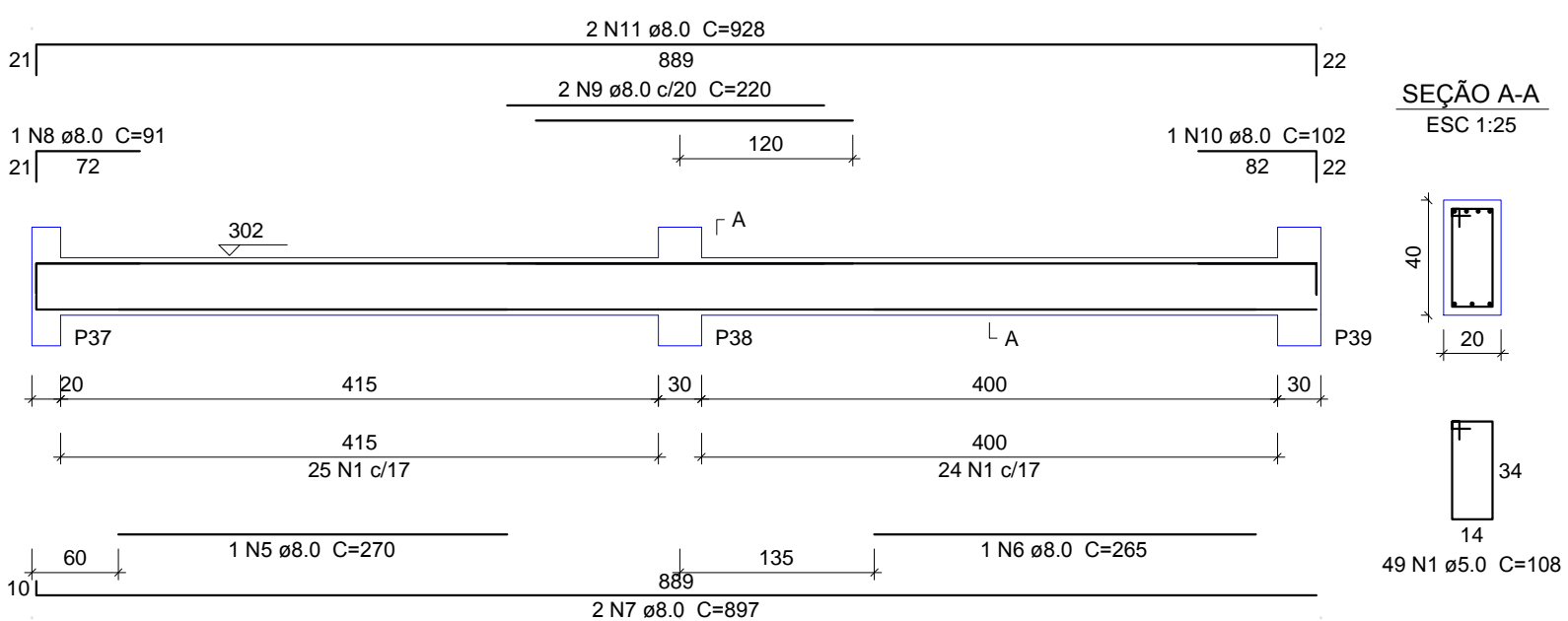
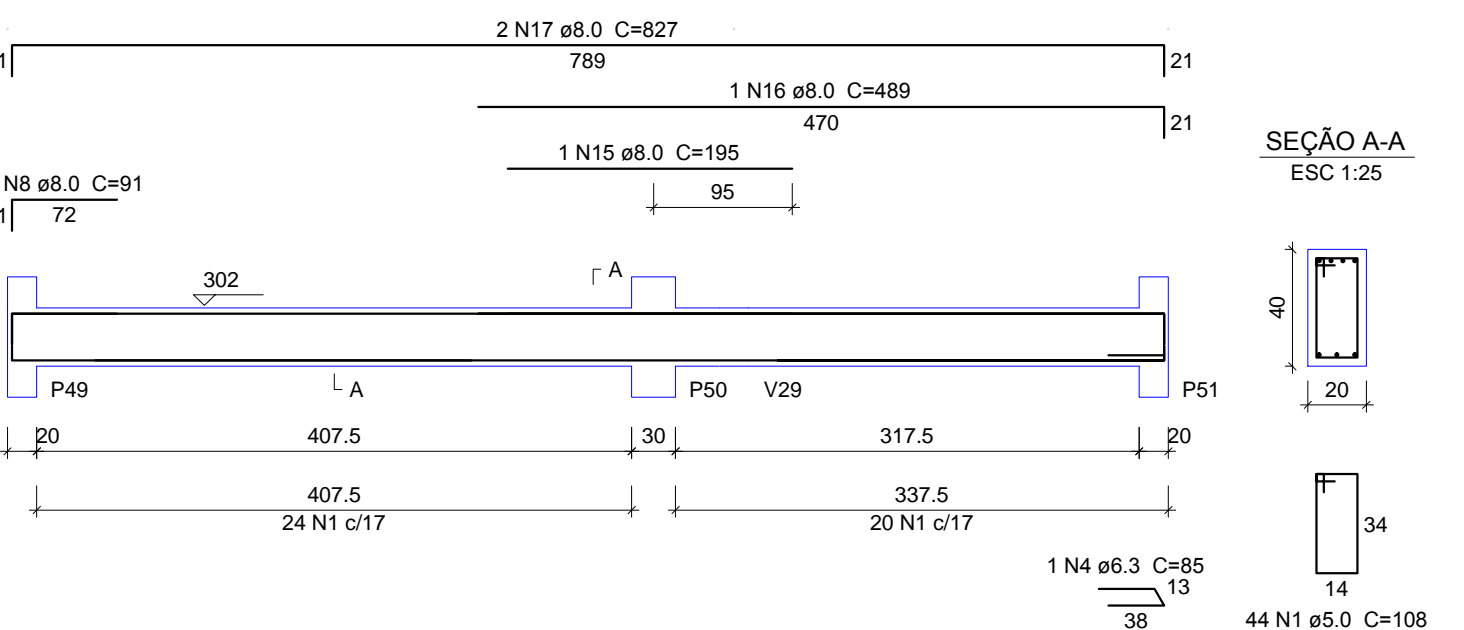


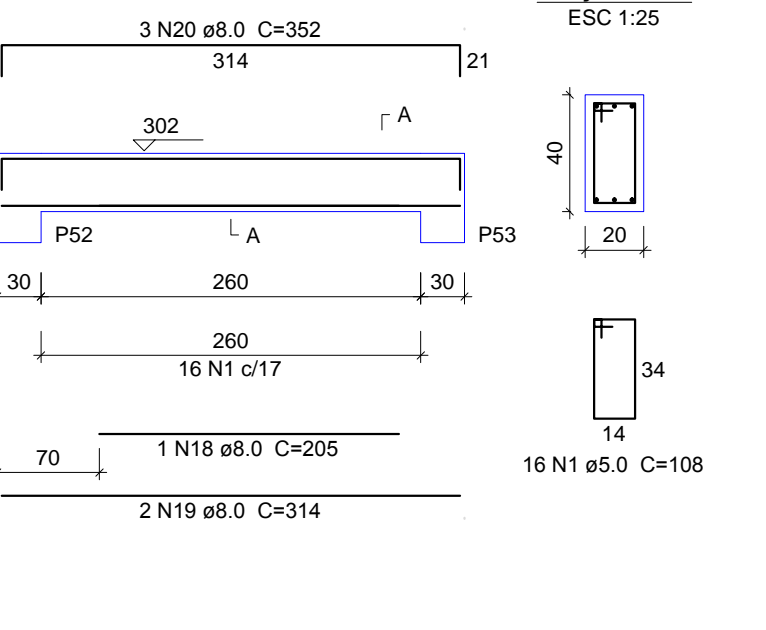
V15
ESC 1:50



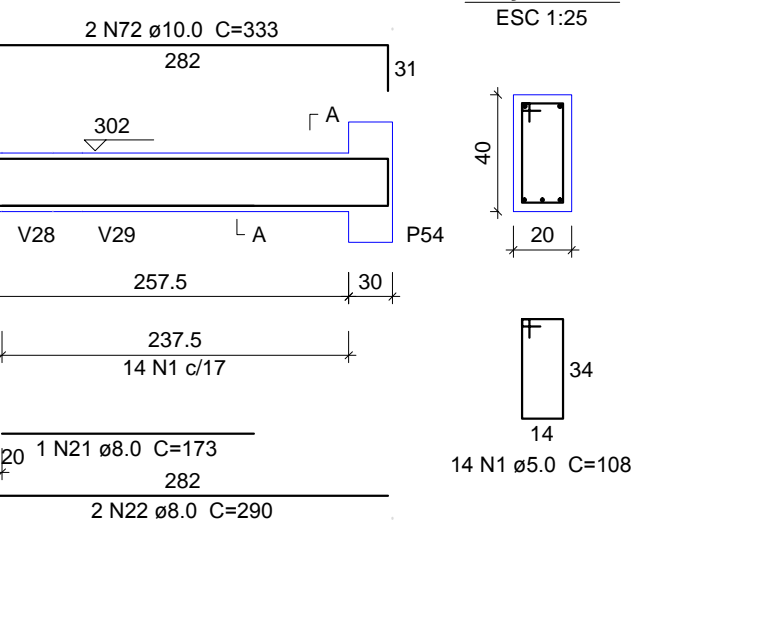
V17
ESC 1:50



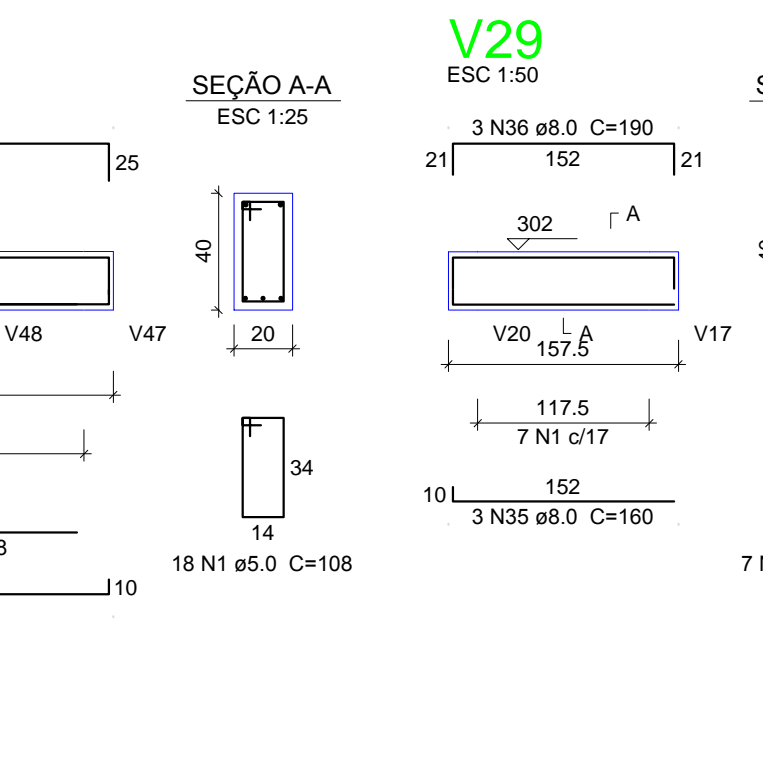
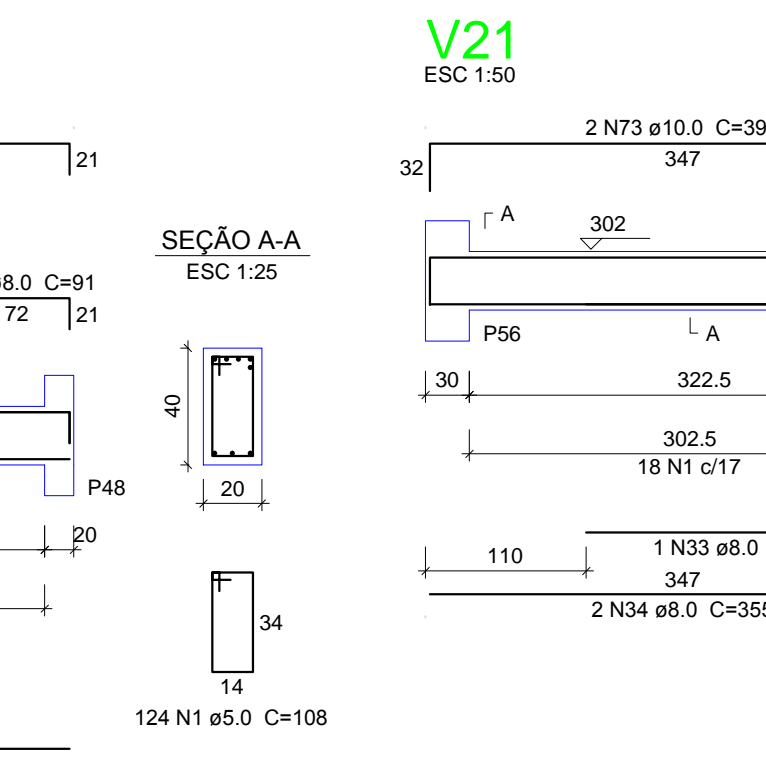
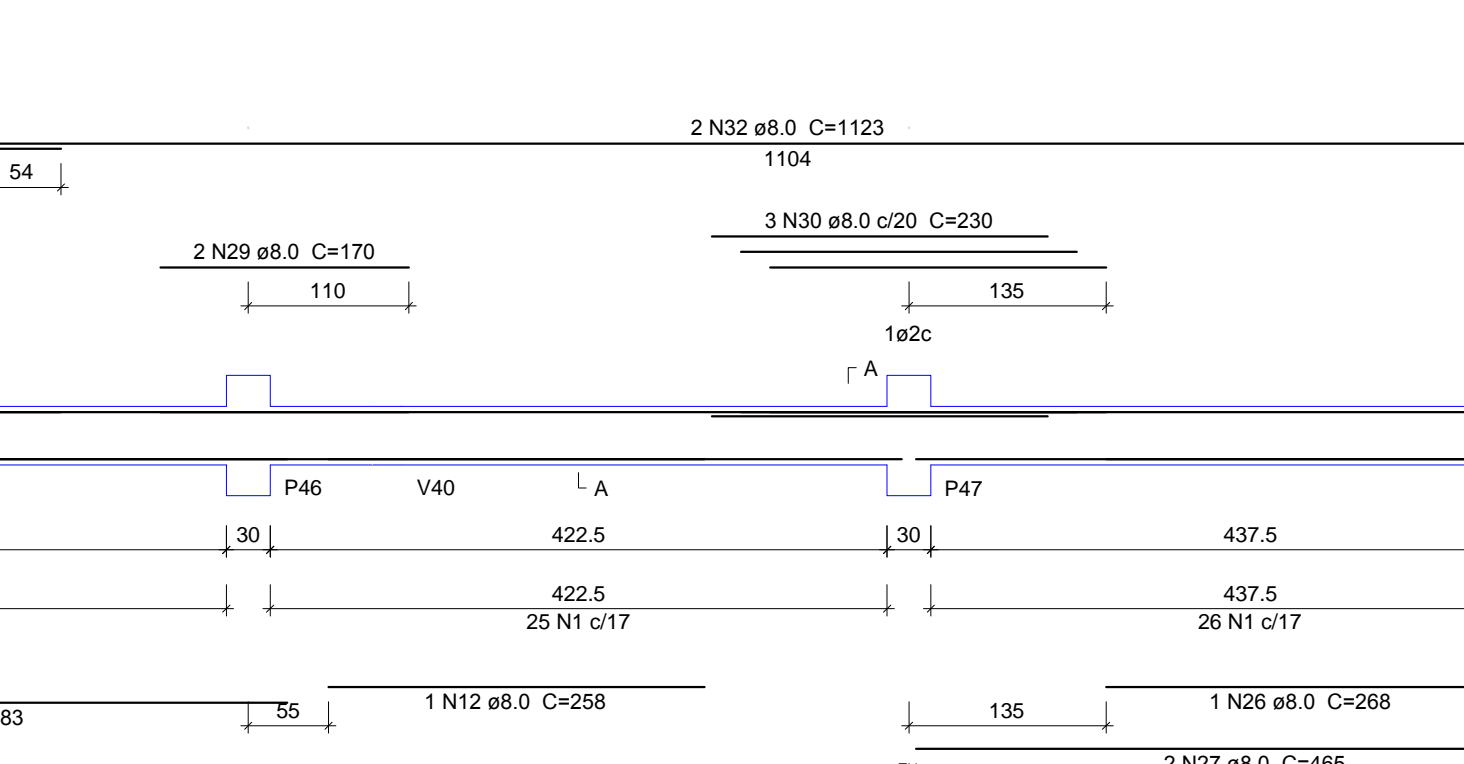
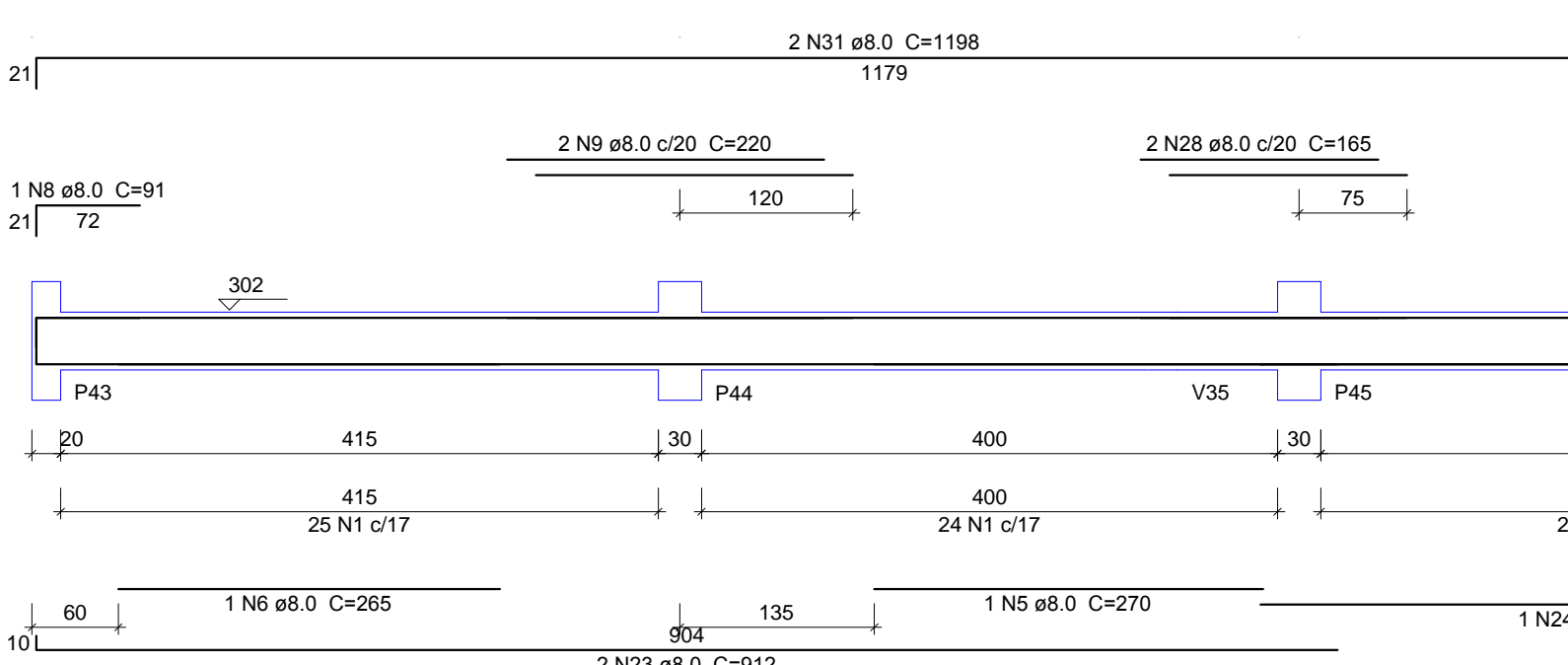
V18
ESC 1:50



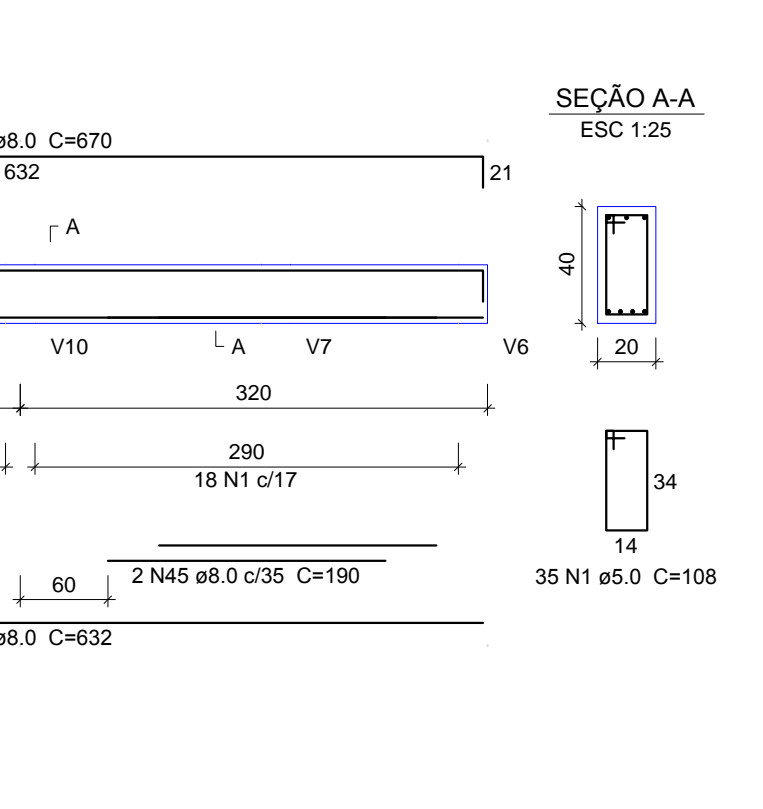
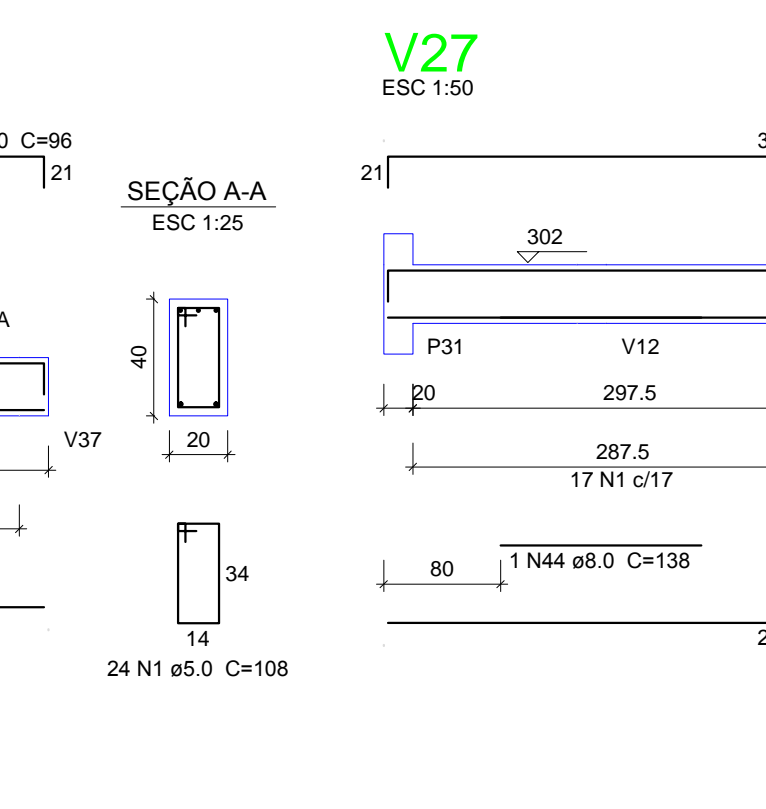
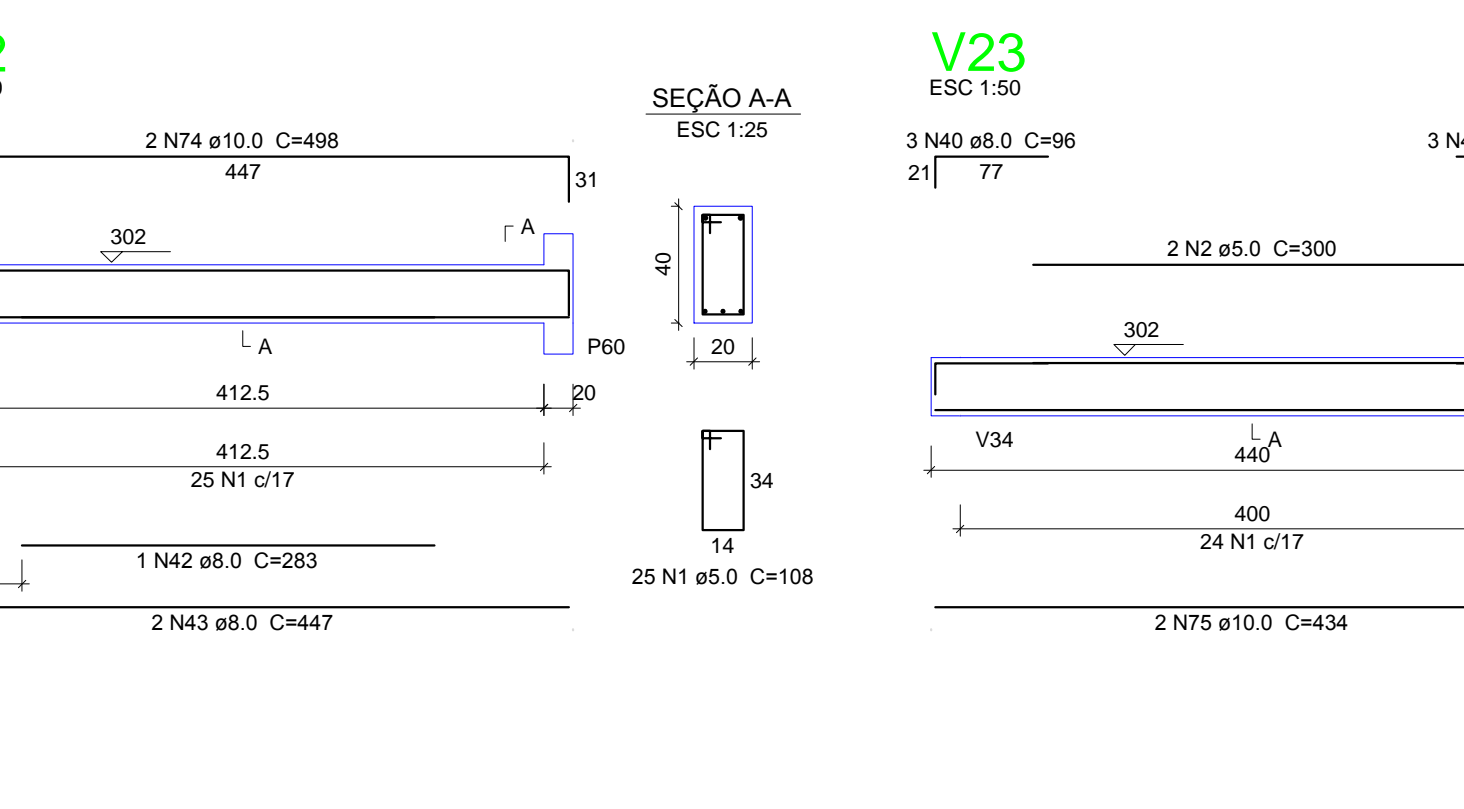
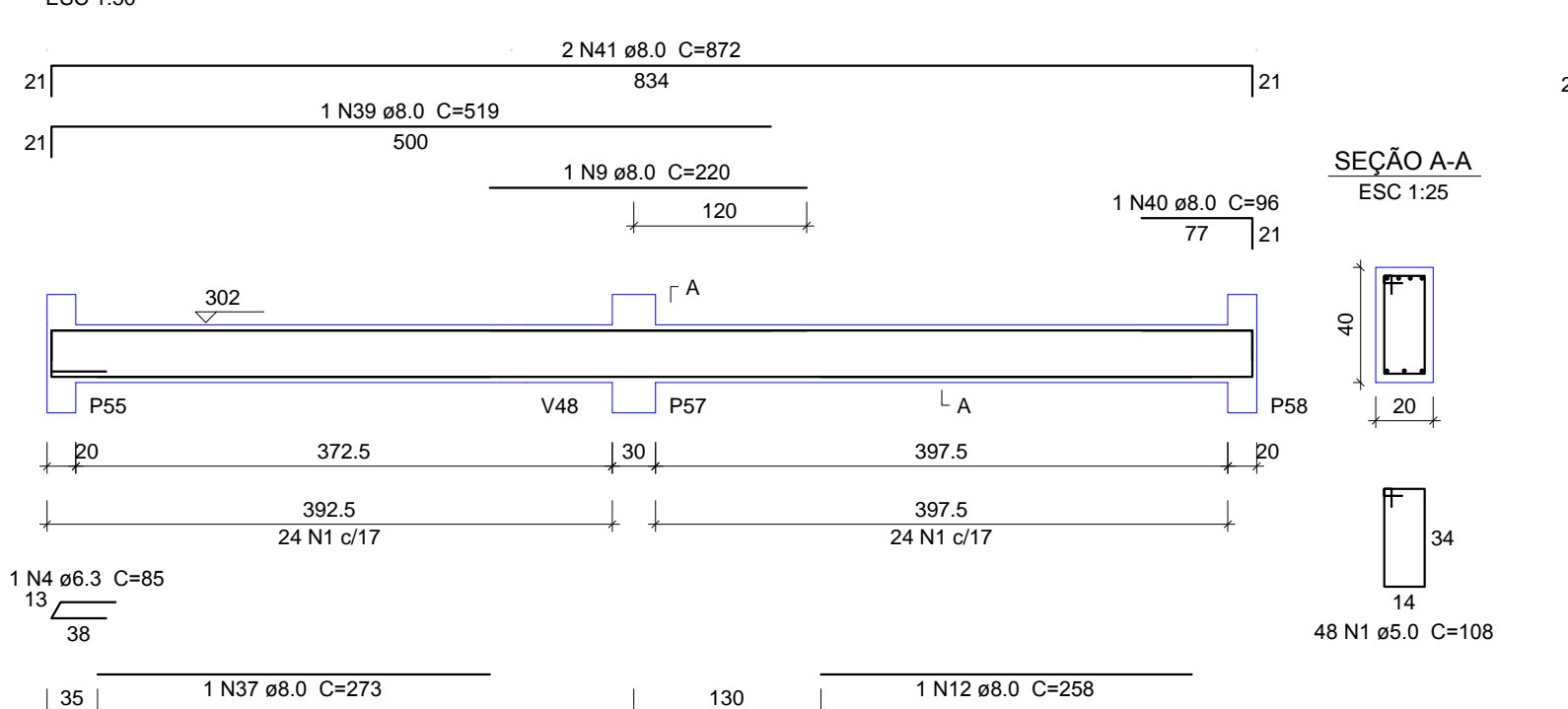
V20
ESC 1:50



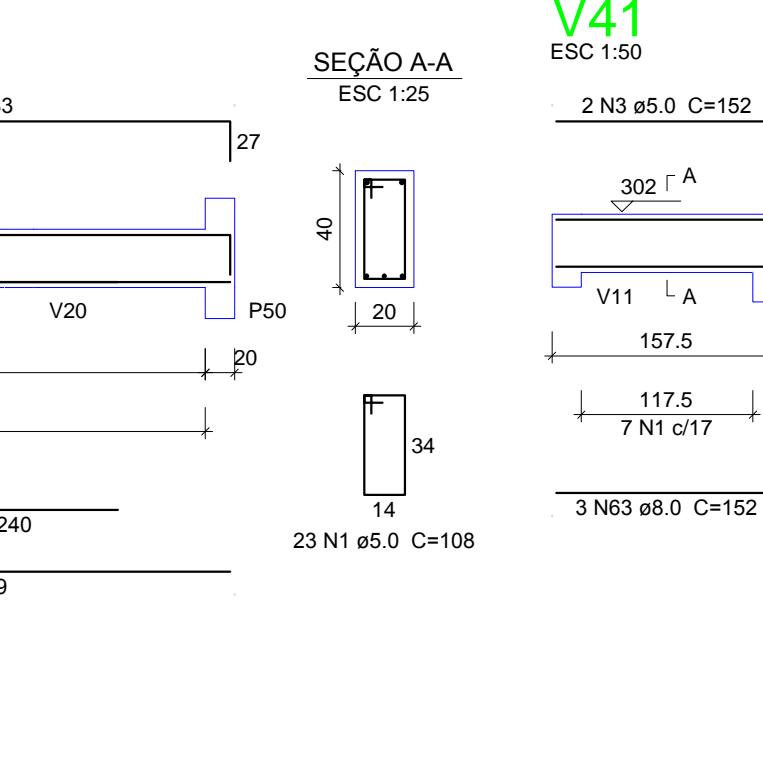
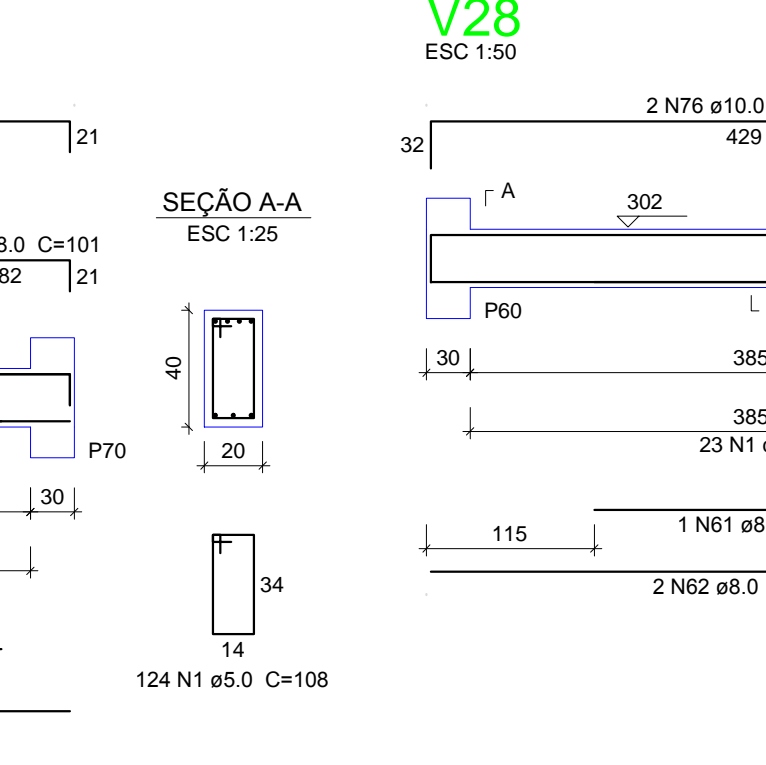
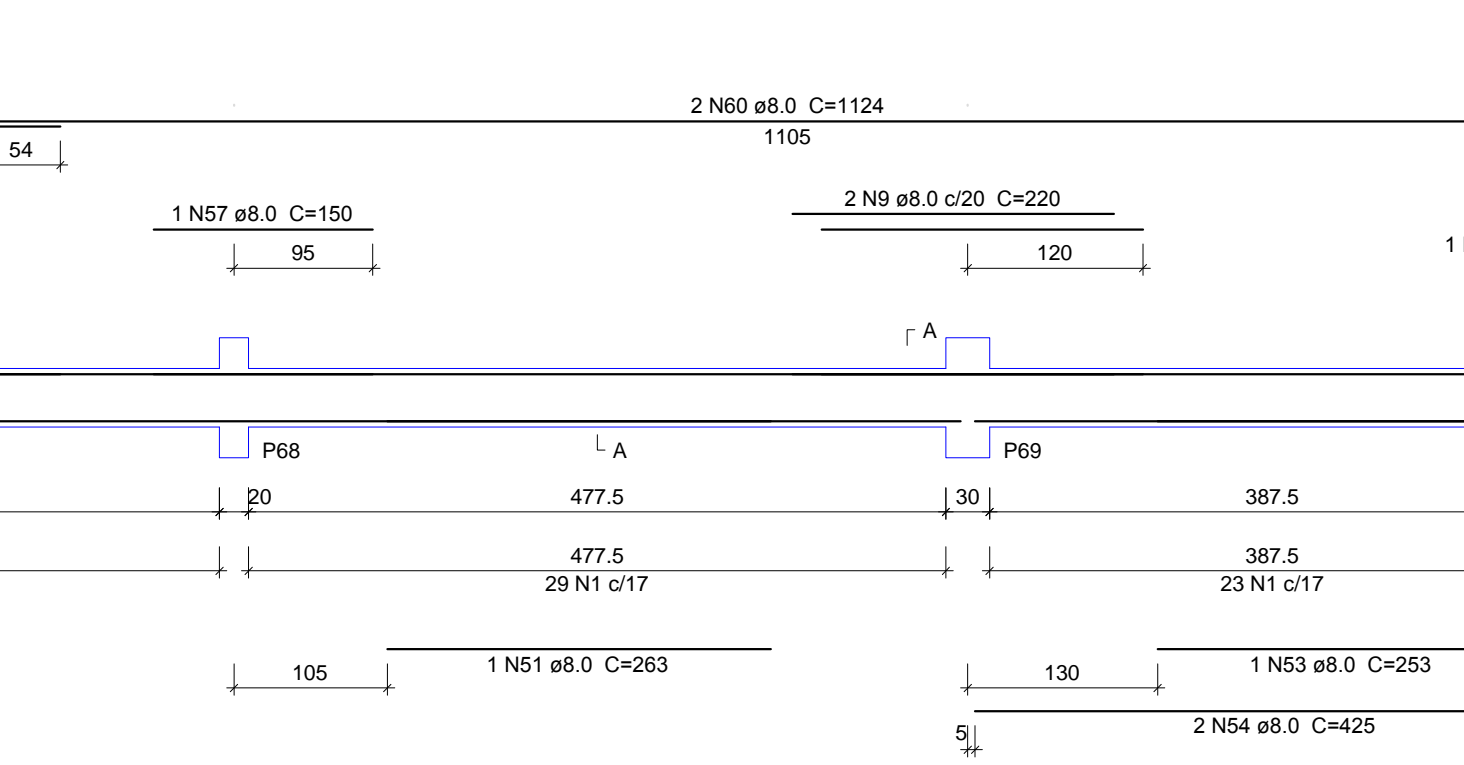
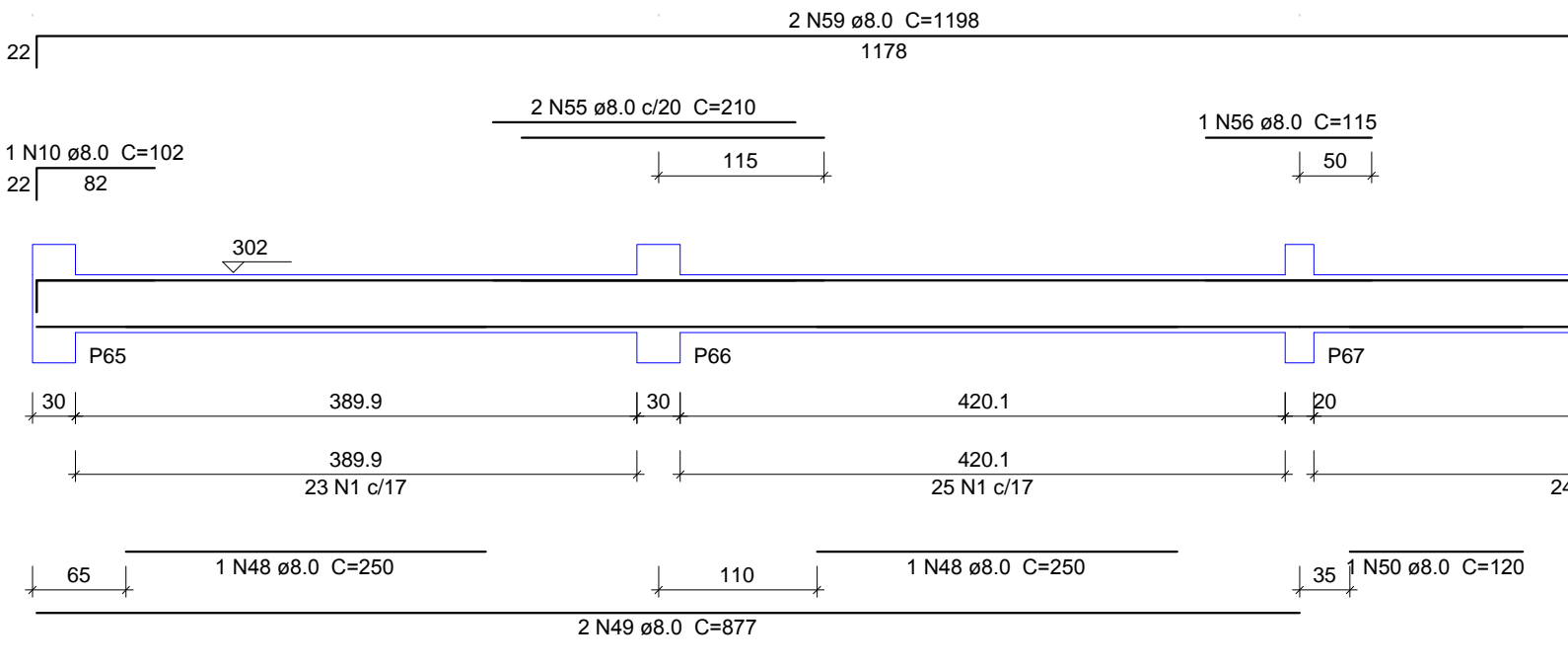
V16
ESC 1:50



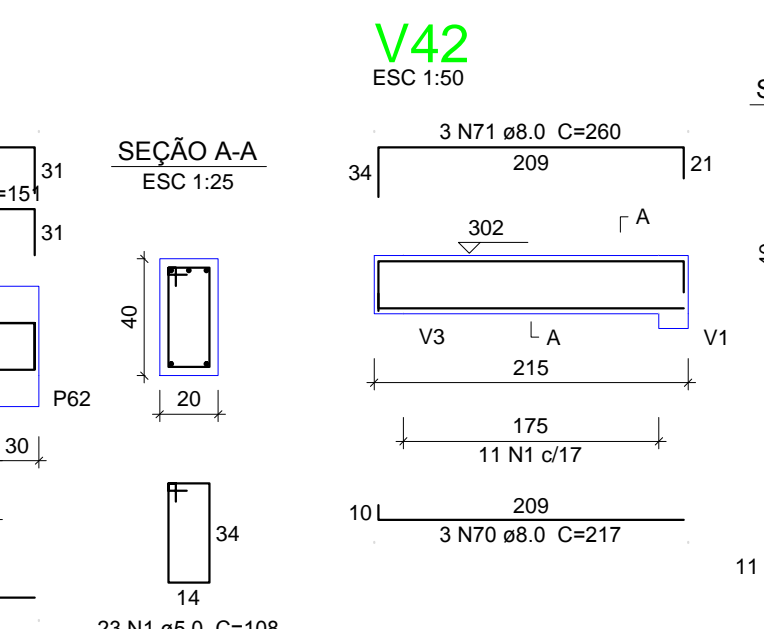
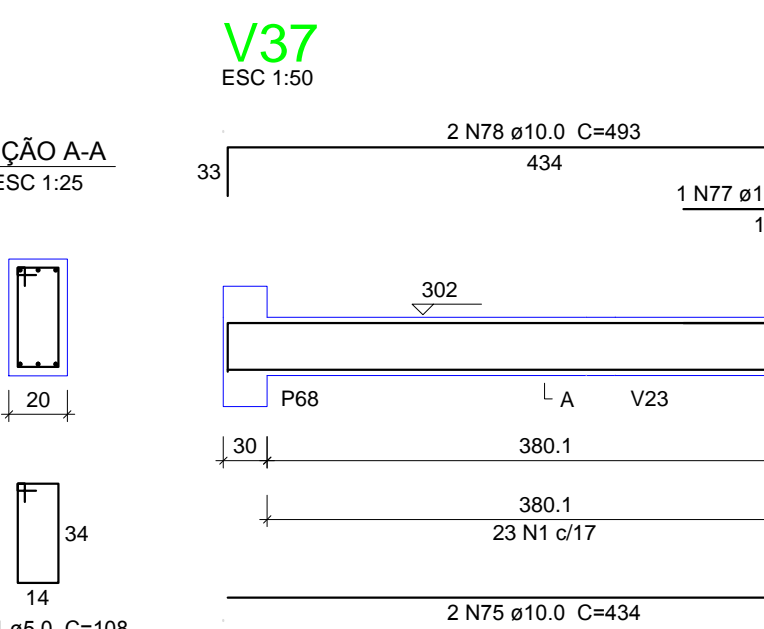
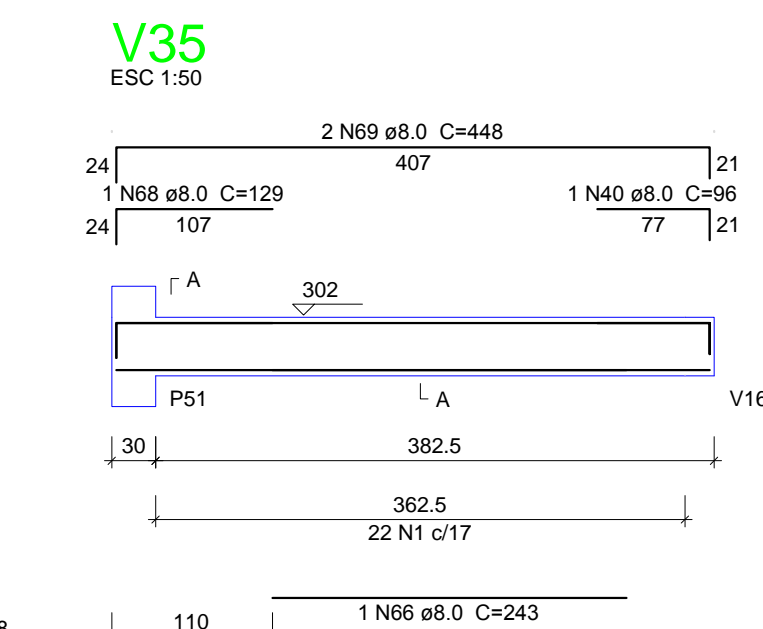
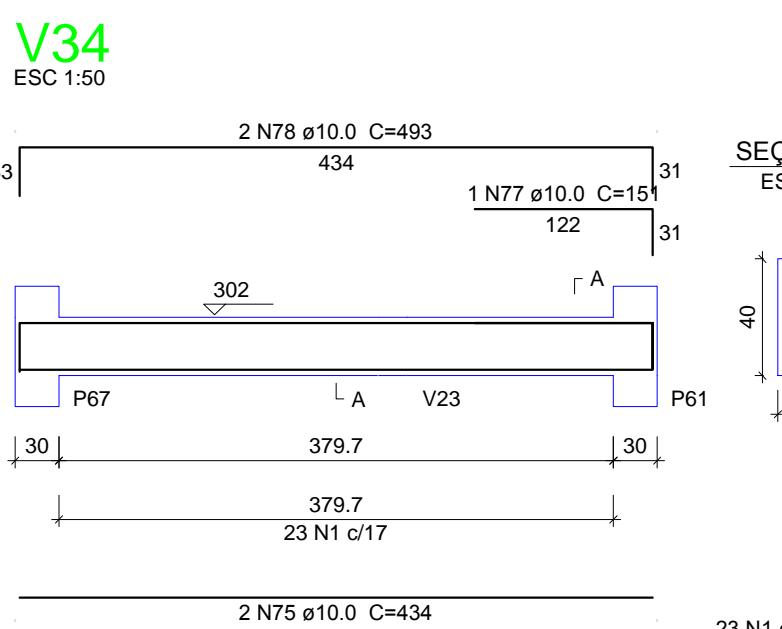
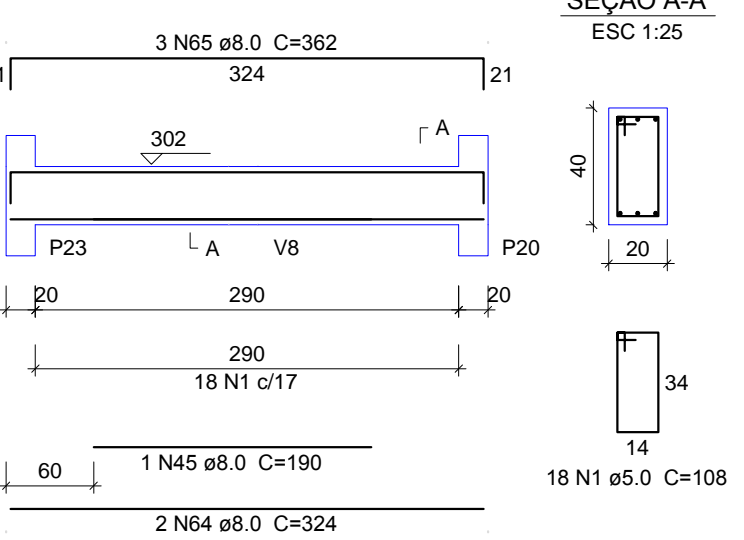
V19
ESC 1:50



V24
ESC 1:50



V30
ESC 1:50



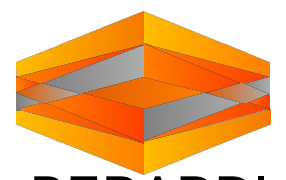
Relação do aço

CAÇO	N	DIAM (mm)	QUANT (Barras)	UNIT (cm)	C.TOTAL (cm)
CA60	1	5.0	655	108	70740
	2	5.0	2	300	600
	3	5.0	2	152	304
	4	6.3	2	95	170
	5	8.0	2	270	540
	6	8.0	2	265	530
	7	8.0	2	897	1794
	8	8.0	4	91	364
	9	8.0	7	220	1540
	10	8.0	2	102	204
	11	8.0	2	928	1856
	12	8.0	3	258	774
	13	8.0	1	273	273
	14	8.0	2	805	1610
	15	8.0	1	195	195
	16	8.0	1	489	489
	17	8.0	2	827	1654
	18	8.0	1	205	205
	19	8.0	2	314	628
	20	8.0	3	352	1056
	21	8.0	1	173	173
	22	8.0	2	290	580
	23	8.0	2	912	1824
	24	8.0	1	483	483
	25	8.0	2	904	1808
	26	8.0	2	268	268
	27	8.0	2	465	930
	28	8.0	2	165	330
	29	8.0	2	170	340
	30	8.0	3	230	690
	31	8.0	2	1198	2396
	32	8.0	2	1123	2246
	33	8.0	1	218	218
	34	8.0	2	355	710
	35	8.0	3	160	480
	36	8.0	3	190	570
	37	8.0	1	275	275
	38	8.0	2	860	1720
	39	8.0	1	519	519
	40	8.0	8	96	768
	41	8.0	2	872	1744
	42	8.0	1	283	283
	43	8.0	2	447	894
	44	8.0	1	138	138
	45	8.0	3	190	570
	46	8.0	2	632	1264
	47	8.0	3	670	2010
	48	8.0	2	500	500
	49	8.0	2	877	1754
	50	8.0	1	120	120
	51	8.0	1	263	263
	52	8.0	2	918	1836
	53	8.0	1	253	253
	54	8.0	1	425	425
	55	8.0	2	210	420
	56	8.0	1	115	115
	57	8.0	1	150	150
	58	8.0	1	101	101
	59	8.0	2	1198	2396
	60	8.0	2	1124	2248
	61	8.0	1	240	240
	62	8.0	2	429	858
	63	8.0	3	152	456
	64	8.0	2	324	648
	65	8.0	3	362	1086
	66	8.0	1	243	243
	67	8.0	2	407	814
	68	8.0	1	129	129
	69	8.0	2	448	896
	70	8.0	3	217	651
	71	8.0	3	260	780
	72	10.0	2	333	666
	73	10.0	2	399	798
	74	10.0	2	498	996
	75	10.0	6	434	2604
	76	10.0	3	483	966
	77	10.0	2	151	302
	78	10.0	4	493	1972

Resumo do aço

CAÇO	DIAM (mm)	C.TOTAL (m)	PESO + 10% (kg)
CA50	6.3	1.7	0.5
	8.0	557.3	241.9
	10.0	63.1	56.3
CA60	5.0	716.5	121.5
PESO TOTAL (kg)			
CA50		298.7	
CA60		121.5	

Volume de concreto (C-30) = 9.66 m³
Área de forma = 120.77 m²



BERARDI ENGENHARIA & CONSTRUÇÕES LTDA.

Rua Capitão Euterio, 610, Sala 406, Edifício Centro Executivo, Passo Fundo/RS 99010-060
berardiengenharia@gmail.com (54) 3313 9870 - (54) 9994 0937
CNPJ: 13.425.382/0001-47

RESPONSÁVEL TÉCNICO: Jean Berardi Manica
CONTRATANTE: Prefeitura Municipal de Jóiá
Cnpj: 09.650.121/0001-92

PROJETO: **PROJETO ESTRUTURAL**

CONTEUDO DA PRANCHA: **FERRAGEM VIGAS BALDRAME PAVIMENTO TÉRREO 02**

ENDEREÇO DA OBRA: Rua Dr. Edmar Krueel - Nº 188 - Centro - Jóiá/RS

PROJETA: Jean Berardi | ESCALA: 1/50 | DATA: Agosto de 2017 | ÁREA DO PROJETO: 1.139,11 m²

E-09

DIREITOS AUTORAIS RESERVADOS CONFORME ARTIGO 184 DO CÓDIGO PENAL LEI 9610 DE 19/02/1998 E RESOLUÇÃO CONFEA 205/71