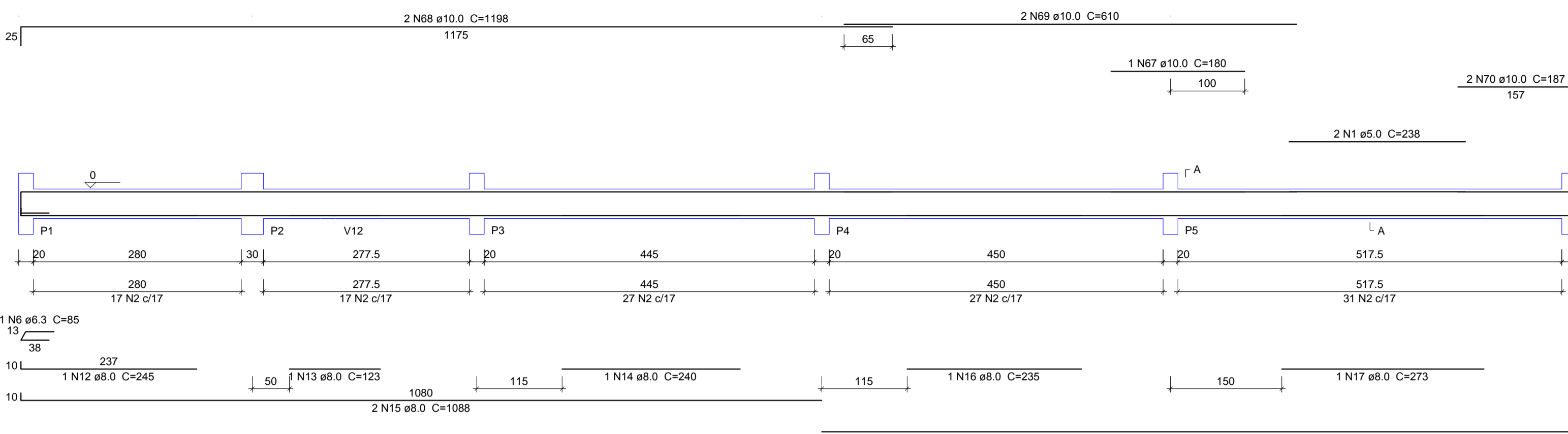
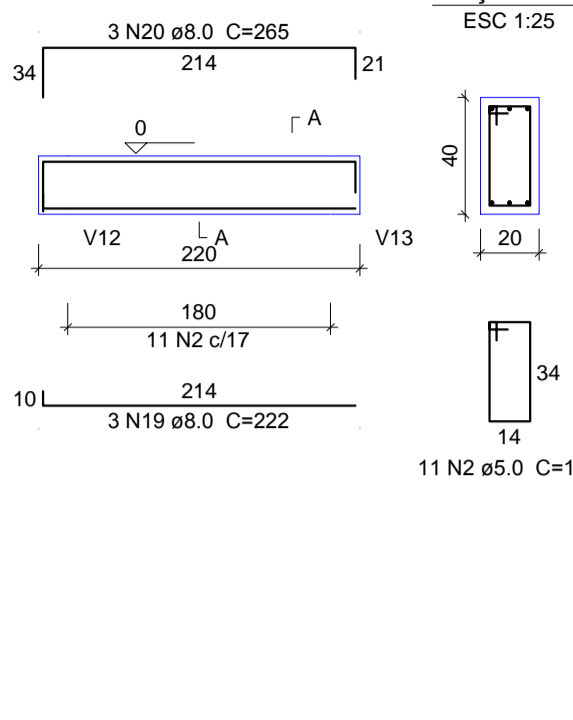


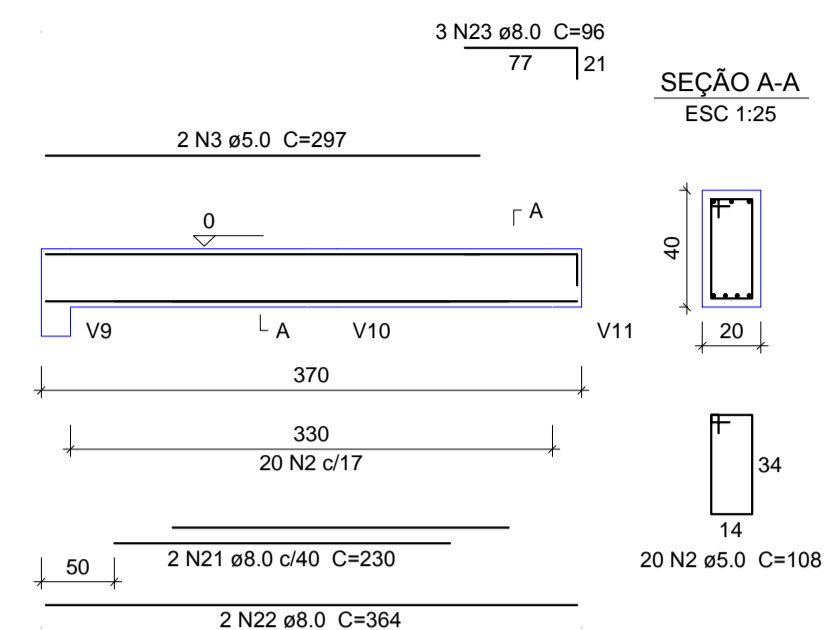
V1
ESC 1:50



V2
ESC 1:50



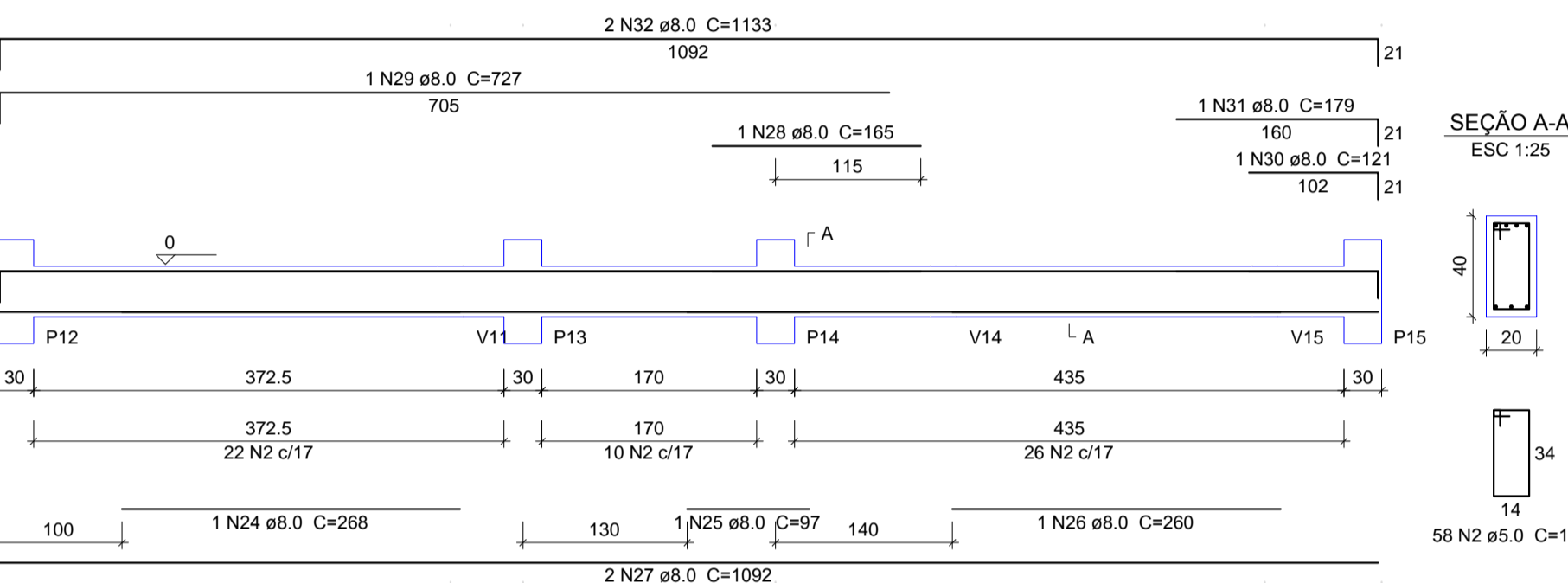
V4
ESC 1:50



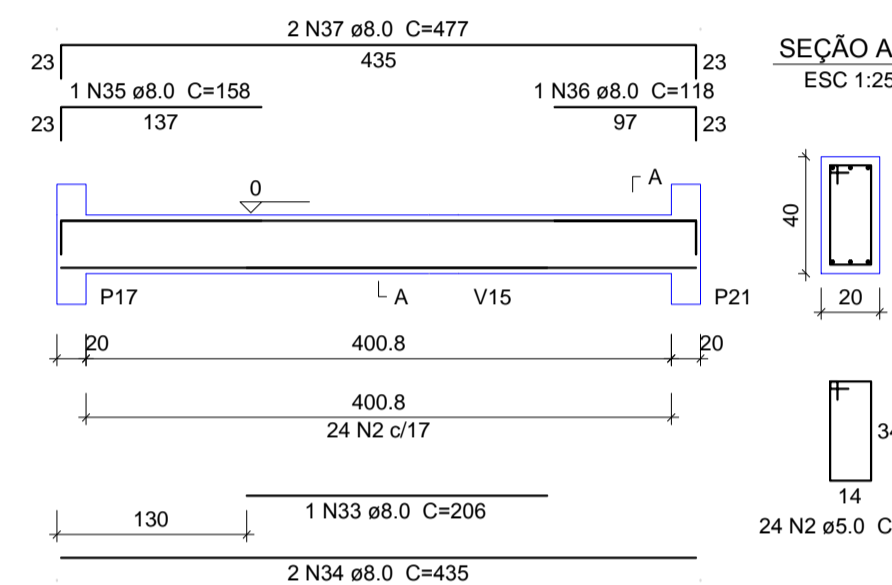
Relação do aço

AÇO	N	DIAM (mm)	QUANT (Barras)	UNIT (cm)	C.TOTAL (cm)
CA60	1	5.0	2	238	476
	2	5.0	472	108	50976
	3	5.0	4	297	1188
	4	5.0	2	230	460
	5	5.0	84	148	12432
CA50	6	6.3	4	85	340
	7	6.3	8	CORR	2304
	8	6.3	16	CORR	4560
	9	6.3	8	CORR	2480
	10	6.3	8	CORR	1904
	11	6.3	1	105	105
	12	8.0	1	245	245
	13	8.0	1	123	123
	14	8.0	2	240	480
	15	8.0	2	1088	2176
	16	8.0	1	235	235
	17	8.0	1	273	273
	18	8.0	2	1015	2030
	19	8.0	3	222	666
	20	8.0	3	265	795
	21	8.0	5	230	1150
	22	8.0	4	364	1456
	23	8.0	12	96	1152
	24	8.0	1	268	268
	25	8.0	1	97	97
	26	8.0	1	260	260
	27	8.0	2	1092	2184
	28	8.0	2	165	330
	29	8.0	1	727	727
	30	8.0	1	121	121
	31	8.0	1	179	179
	32	8.0	2	1133	2266
	33	8.0	1	206	206
	34	8.0	2	435	870
	35	8.0	1	158	158
	36	8.0	1	118	118
	37	8.0	2	477	954
	38	8.0	1	280	280
	39	8.0	1	94	94
	40	8.0	1	297	297
	41	8.0	2	765	1530
	42	8.0	1	359	359
	43	8.0	1	169	169
	44	8.0	2	890	1780
	45	8.0	1	238	238
	46	8.0	2	898	1796
	47	8.0	1	248	248
	48	8.0	2	440	880
	49	8.0	1	966	966
	50	8.0	3	170	510
	51	8.0	1	200	200
	52	8.0	1	91	91
	53	8.0	2	1198	2396
	54	8.0	2	1123	2246
	55	8.0	3	183	549
	56	8.0	1	248	248
	57	8.0	2	185	370
	58	8.0	2	968	1936
	59	8.0	1	205	205
	60	8.0	1	295	295
	61	8.0	2	598	1196
	62	8.0	4	1198	4792
	63	8.0	4	443	1772
	64	8.0	1	342	342
	65	8.0	2	659	1318
	66	8.0	3	697	2091
	67	10.0	1	180	180
	68	10.0	2	1198	2396
	69	10.0	2	610	1220
	70	10.0	2	187	374
	71	10.0	2	364	728
	72	10.0	2	809	1618

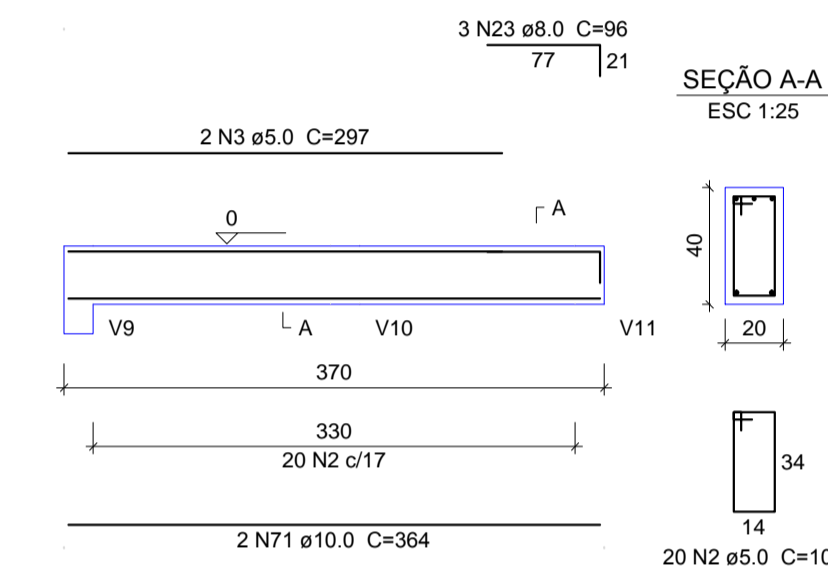
V3
ESC 1:50



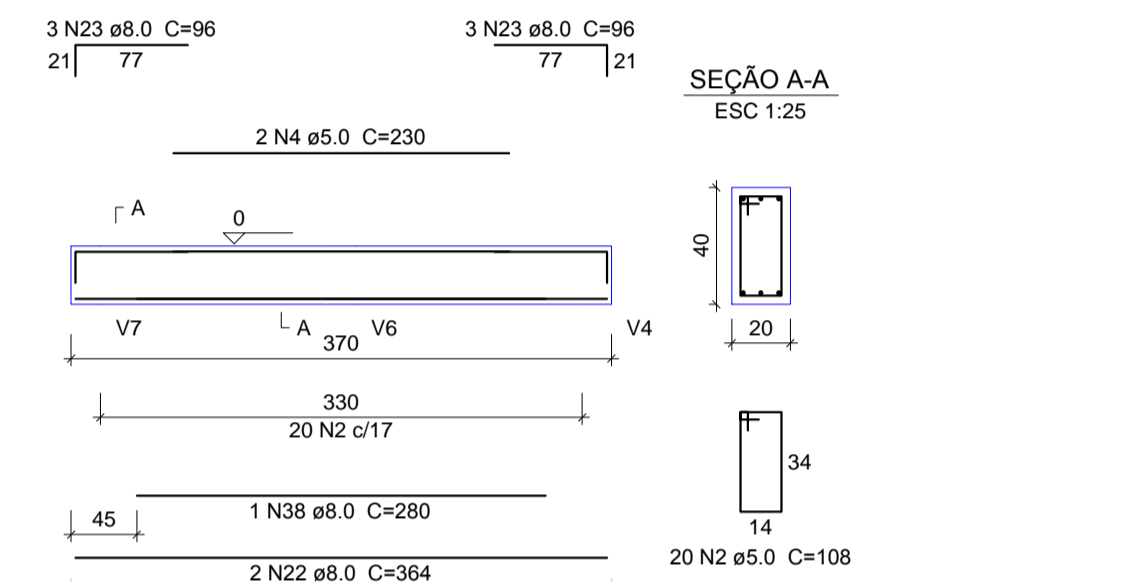
V5
ESC 1:50



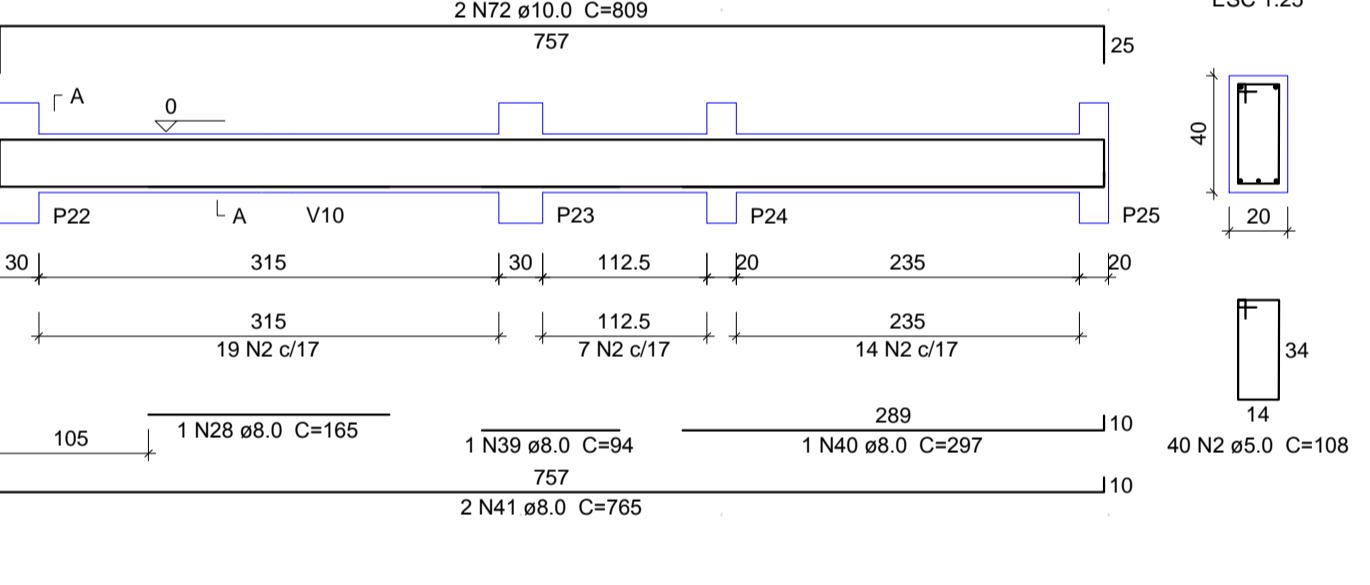
V6
ESC 1:50



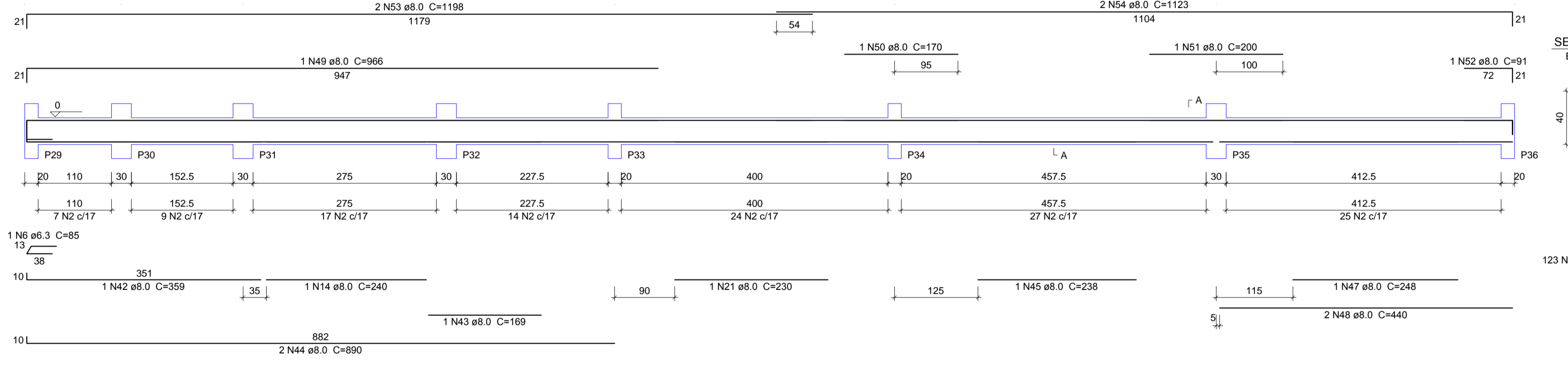
V10
ESC 1:50



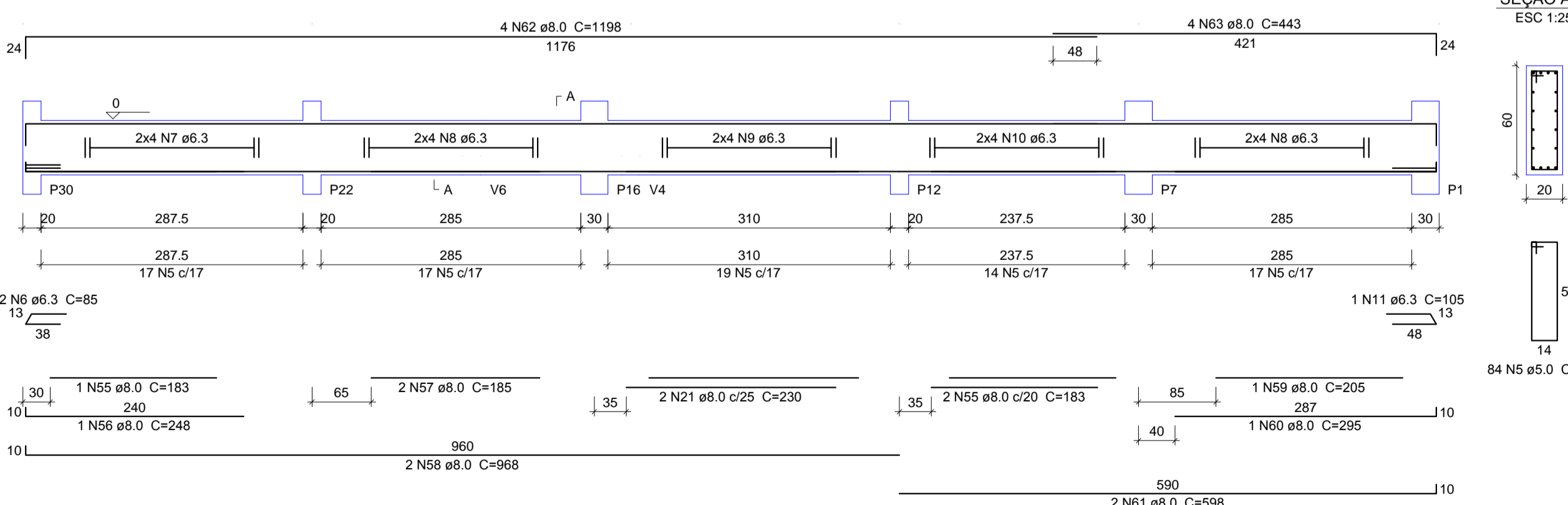
V7
ESC 1:50



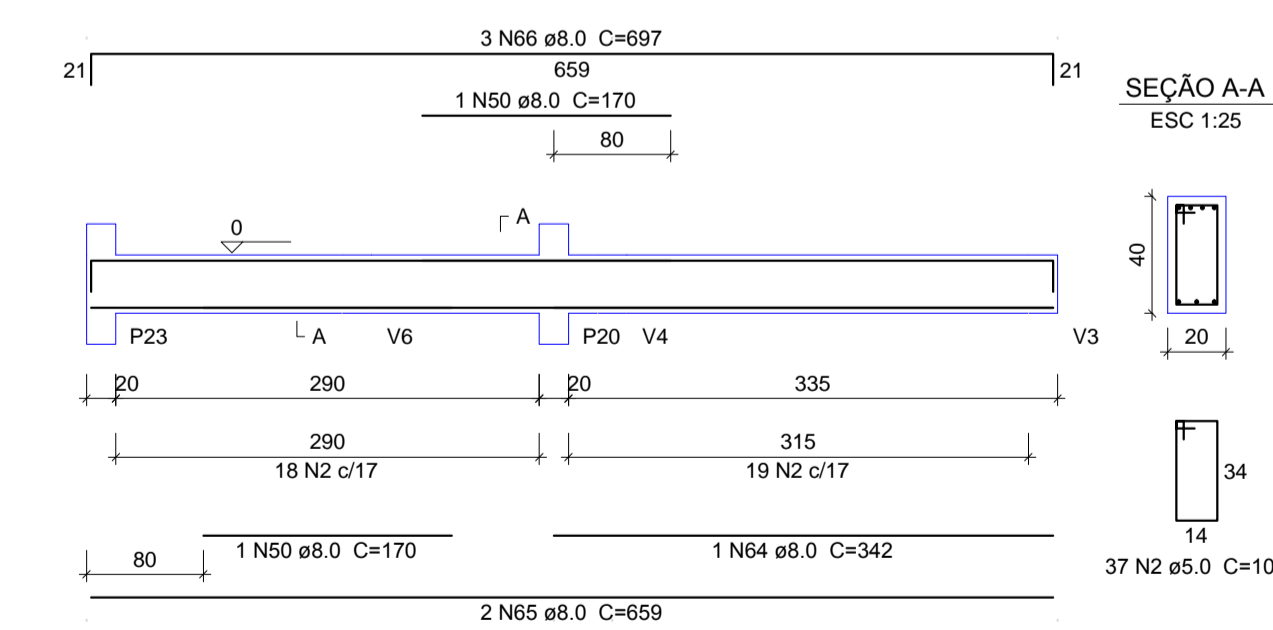
V8
ESC 1:50



V9
ESC 1:50



V11
ESC 1:50



Resumo do aço

AÇO	DIAM (mm)	C.TOTAL (m)	PESO + 10% (kg)
CA50	6.3	117	31.5
	8.0	487.2	211.4
	10.0	65.2	44.2
CA60	5.0	655.4	111.1
PESO TOTAL (kg)			
CA50		287.1	
CA60		111.1	

Volume de concreto (C-30) = 8.77 m³
Área de forma = 108.08 m²



BERARDI ENGENHARIA & CONSTRUÇÕES LTDA.
Rua Capitão Euteuário, 610, Sala 406, Edifício Centro Executivo, Passo Fundo/RS 99010-060
berardiengenharia@gmail.com (54) 3333 9870 (54) 9994 0937
CNPJ: 13.425.382/0001-47

RESPONSÁVEL TÉCNICO: Jean Berardi Manica Engº Civil CREA-RS 133.545-D
CONTRATANTE: Prefeitura Municipal de Jóiá Cnpj. 89.650.121/0001-92

PROJETO: PROJETO ESTRUTURAL

CONTEUDO DA PRANCHA: FERRAGEM VIGAS BALDRAME SUB-SOLO 01

ENDEREÇO DA OBRA: Rua Dr. Edmar Kruehl - Nº 188 - Centro - Jóiá/RS
PROJETISTA: Jean Berardi ESCALA: 1/50 DATA: Agosto de 2017 ÁREA DO PROJETO: 1.139,11 m²

E-04

DIREITOS AUTORAIS RESERVADOS CONFORME ARTIGO 184 DO CÓDIGO PENAL LEI 9610 DE 19/02/1998 E RESOLUÇÃO CONFEA 205/71